

## Aluminum ISO-Mono Valves



### "ISO-Mono" Valve Features

- **Compact, one piece, "Mono-Valve" design**
- **Reliable, low particulate, formed bellows assemblies**
- **Viton® sealed bonnet and poppets**
- **Manual and pneumatic operation**
- **Right angle and inline mounting configurations**

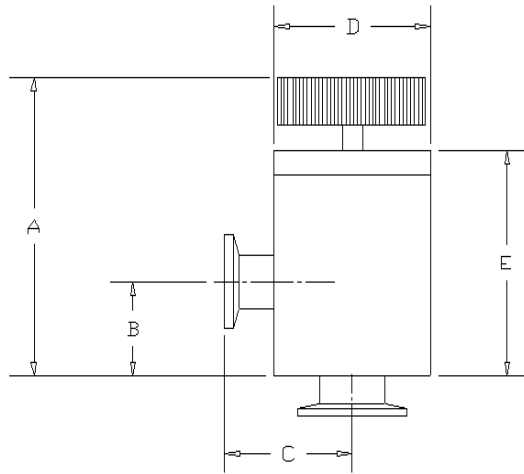
Please call Key High at 631-360-3970 or email us at [info@KeyHigh.com](mailto:info@KeyHigh.com) for the most up-to-date listing of products and for pricing information.

### Features:

**ISO-Mono** valves feature valve bodies which are fabricated from a single piece of 6061t6 billet aluminum. This translates to a sleek efficient design, with extremely smooth flow paths. There are no seams, virtual leaks are eliminated, and valve bodies very easy to clean. **ISO-Mono** valve bodies are light, strong, and have a high fluorine resistance. Aluminum also has excellent thermal conductivity. Naturally this thermal conductivity is uniform, allows the body to reach a uniform temperature quickly, thereby minimizing cold spots, making **ISO-Mono** valves a great choice for CVD applications. Furthermore since the valve body is machined completely from one piece of material, flange interfaces are flat, straight, square, and abide by ISO mounting principles.

**Key High Vacuum Products, Inc.** pneumatic ISO-Mono valves are versatile and reliable shut-off valves. Our pneumatic versions are fail safe, single acting (spring loaded, normally closed), and will function in any position. ISO-Mono valves are provided, (inclusive) with a 120/60 Solenoid. All valve assemblies are leak tested on a helium mass spectrometer @  $3 \times 10^{-9}$  torr (with a one atmosphere differential). ISO-Mono valves bodies are bakeable to 150° C. See ordering blocks for additional options, and soft goods maintenance kits.

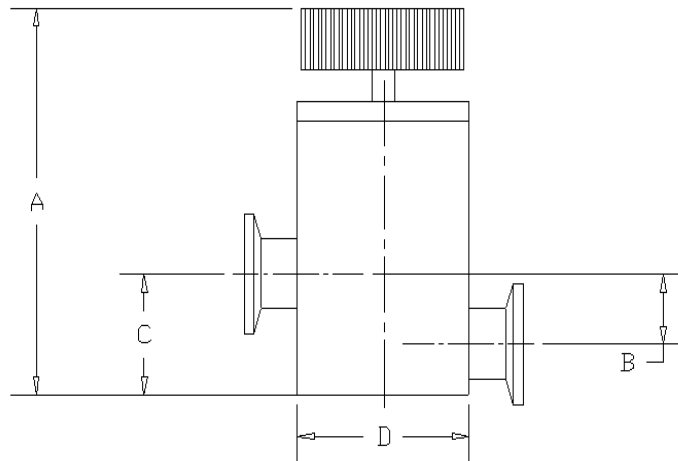
# Aluminum ISO-Mono Valves



## Manual Right Angle Valves

Part Number	Flange (port) Size	A	B	C	D	E
<b>KAIV-16★</b>	NW 16	3.2	1.57	1.57	2.05	2.50
<b>KAIV-25★</b>	NW 25	3.37	1.97	1.97	2.05	2.45
<b>KAIV-40★</b>	NW 40	4.75	2.57	2.57	3.05	3.49
<b>KAIV-50★</b>	NW 50	5.00	2.80	2.80	3.89	4.36

★ = New Product



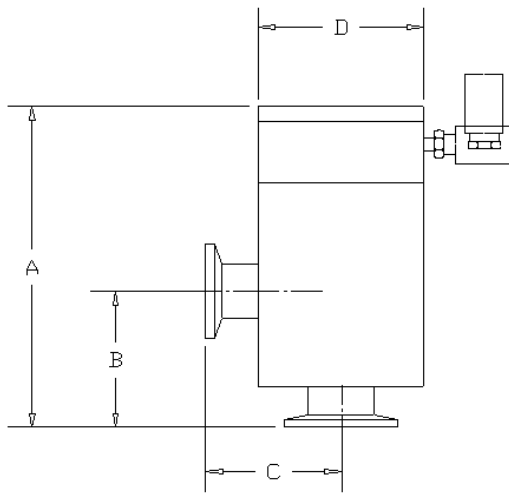
## Manual Inline Valves

Part Number	Flange (port) Size	A	B	C	D
<b>KAIV-16★</b>	NW 16	4.35	0.87	1.58	2.00
<b>KAIV-25★</b>	NW 25	4.50	1.25	1.98	2.00
<b>KAIV-40★</b>	NW 40	5.87	1.77	2.57	3.00

★ = New Product



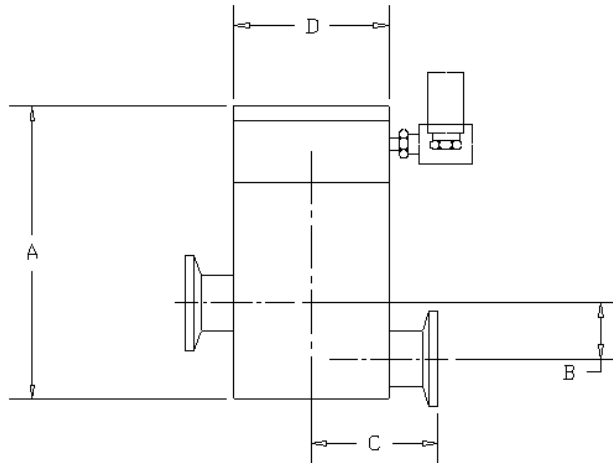
# Aluminum ISO-Mono Valves



## Pneumatic Right Angle Valves

Part Number	Flange (port) Size	A	B	C	D
<b>KAHV-16-P★</b>	NW 16	4.58	1.57	1.57	2.00
<b>KAHV-25-P★</b>	NW 25	4.94	1.97	1.97	2.00
<b>KAHV-40-P★</b>	NW 40	6.04	2.57	2.57	3.00
<b>KAHV-50-P★</b>	NW 50	7.03	2.80	2.80	3.90

★ = New Product



## Pneumatic Inline Valves

Part Number	Flange (port) Size	A	B	C	D
<b>KAIV-16-P★</b>	NW 16	4.89	0.87	1.58	2.00
<b>KAIV-25-P★</b>	NW 25	5.26	1.25	1.98	2.00
<b>KAIV-40-P★</b>	NW 40	6.65	1.77	2.57	3.00

★ = New Product



# Aluminum ISO-Mono Valves

## **Pneumatic valve options** (Add option code to suffix of part number)

Description	Option Code	
24 Volt DC solenoid	-24VDC	Add
24 Volt AC solenoid	-24VAC	Add
220 Volt AC solenoid	-220VAC	Add
Mechanical Limit Switches	-LS	Add
No Solenoid	-NS	Deduct

## **"Soft Goods" (Viton®) manual valves**

Part Number	Description
OR-KAAV-16★	Fits NW 16
OR-KAAV-25★	Fits NW 25
OR-KAAV-40★	Fits NW 40
OR-KAAV-50★	Fits NW 50

## **"Soft Goods" (Viton®) pneumatic valves**

Part Number	Description
OR-KAAV-16-P★	Fits NW 16
OR-KAAV-25-P★	Fits NW 25
OR-KAAV-40-P★	Fits NW 40
OR-KAAV-50-P★	Fits NW 50



## **Replacement bellows assemblies**

Part Number	Description
AVB-16★	Fits NW 16
AVB-25★	Fits NW 25
AVB-40★	Fits NW 40
AVB 50★	Fits NW 50

**Note:** Key High Vacuum Products, Inc. routinely modifies our product line to fit individual requirements. Nickel plating, Kalrez® 4079, Chemrez® seals, etc. are all available upon request.

