

Pneumatic Throttling Valves

New



Key High Vacuum Products, Inc. is pleased to introduce our innovative Pneumatic Throttling Valve (**PTV**) line. **PTV's** reduce vacuum system costs while simultaneously enhancing performance; these next-generation vacuum control valves deserve consideration. **PTV's** represent a breakthrough in vacuum system design by combining multiple vacuum control functions into a single unit. This eliminates redundant vacuum components, streamlining system design, process control, reducing costs and allowing customers to use their existing PID controllers.

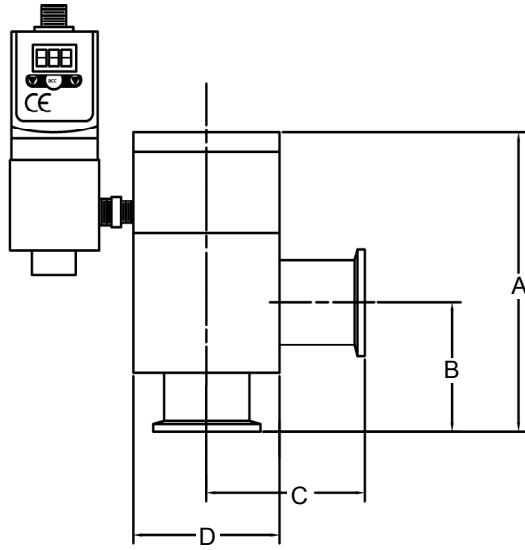
Key High Vacuum Products, Inc.'s PTV is a multi-faceted unit; functioning as an Isolation Valve, Soft Start Valve, and Downstream Pressure Control Valve. **PTV's** are intended for PLC's (or like controllers) which provide a PID signal governing the position of the valve poppet. This is accomplished via closed loop proportional valve technology, which continuously regulates poppet position to precisely control vacuum levels. This simplifies roughing lines by reducing hardware, connections, and frees space in your system enclosure. All the industry leading features of our bellows sealed spring loaded poppet valves are integrated in the **PTV**.

Our **PTV** valves are an ideal choice for integrated pressure control applications. An electronic control signal is sent to the **PTV**, the poppet is moved according to the incoming signal. This optimizes process control by maintaining system pressures, despite the inherently dynamic variations in gas load and system temperatures during most vacuum processes.

Operation basics: To install the **PTV** into the system, connect a clean, dry, 5um filtered, compressed air supply (80-90 psig), to the 1/4" FNPT inlet. Hook up the 4-pin M 12 connector to 24VDC power and PID controller (input signal) thereby supplying the PID control parameters. Valve will start opening between 2.5 / 3.0 volts typically. Note: the **PTV** accepts an input control signal of 0-10vdc. 4-20mA or 0-5VDC can be supplied upon request.

Pneumatic Throttling Valves

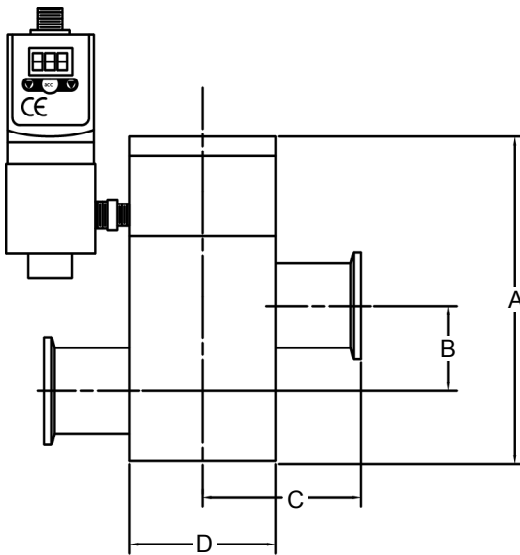
New



Pneumatic Throttling Valves - Aluminum Right Angle

Part Number	Flange (port) Size	A	B	C	D	Price
PTV-KAA-16★	NW 16	4.58	1.57	1.57	2.00	\$1185.00
PTV-KAA-25★	NW 25	4.94	1.97	1.97	2.00	\$1215.00
PTV-KAA-40★	NW 40	6.04	2.57	2.57	3.00	\$1255.00
PTV-KAA-50★	NW 50	7.03	2.80	2.80	3.90	\$1395.00

★ = New Product



Pneumatic Throttling Valves - Aluminum Inline

Part Number	Flange (port) Size	A	B	C	D	Price
PTV-KAI-16★	NW 16	4.89	0.87	1.58	2.00	\$ 1250.00
PTV-KAI-25★	NW 25	5.26	1.25	1.98	2.00	\$ 1285.00
PTV-KAI-40★	NW 40	6.65	1.77	2.57	3.00	\$ 1320.00

★ = New Product

