

Compression Fittings

Introduction:

KEY HIGH VACUUM PRODUCTS, INC.'s compression fittings are manufactured entirely from solid rod and offer a simple effective method for creating a reusable, reliable high vacuum seal that feature raised knurled nuts for finger tightening of the assemblies. All compression assemblies listed here include a viton® o-ring which has a temperature rating of + 200° centigrade.

Materials:

Quick Seals, Line Seals and Cap Seals are offered in three different materials, standard size range of 1/16" to 2-1/8" ID

- Brass units are entirely constructed of brass
- Aluminum units are entirely constructed grade 6061T6
- Stainless steel units feature 304-L bodies and washers with nickel chrome plated nuts

Application:

These compression fittings offer a highly effective quick and positive sealing method of joining vacuum lines, glass ionization gauges tubes, feedthroughs, and also are offered mounted on our MET-SEAL and NW flanges as adapters. All compression fittings are cleaned, packaged and ready for immediate use upon receipt.

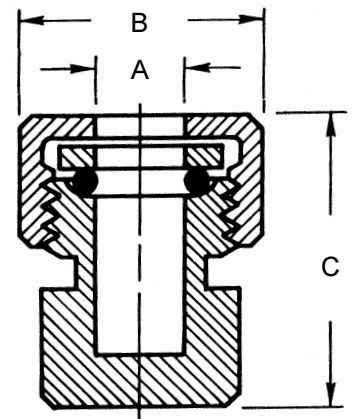


Please call Key High at 631-360-3970 or email us at info@KeyHigh.com for the most up-to-date listing of products and for pricing information.



Cap Seal Fittings

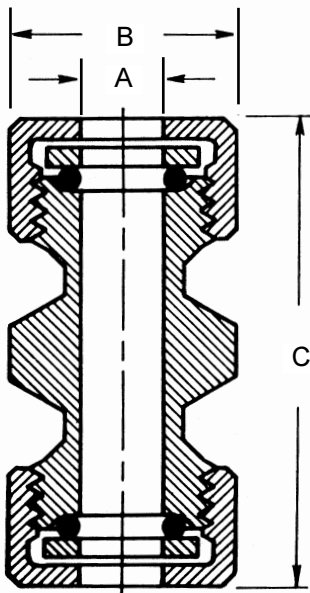
Part No.	Body material	Tube OD	A	B	C
CS-06-AL	6061 T6	1/16"	.072	5/8"	1-1/8"
CS-06-BR	Brass	1/16"	.072	5/8"	1-1/8"
CS-06-SS	304 SS	1/16"	.072	5/8"	1-1/8"
CS-09-AL	6061 T6	3/32"	.103	5/8"	1-1/8"
CS-09-BR	Brass	3/32"	.103	5/8"	1-1/8"
CS-09-SS	304 SS	3/32"	.103	5/8"	1-1/8"
CS-12-AL	6061 T6	1/8"	.135	5/8"	1-1/8"
CS-12-BR	Brass	1/8"	.135	5/8"	1-1/8"
CS-12-SS	304 SS	1/8"	.135	5/8"	1-1/8"
CS-18-AL	6061 T6	3/16"	.197	5/8"	1-1/8"
CS-18-BR	Brass	3/16"	.197	5/8"	1-1/8"
CS-18-SS	304 SS	3/16"	.197	5/8"	1-1/8"
CS-25-AL	6061 T6	1/4"	.260	5/8"	1-1/8"
CS-25-BR	Brass	1/4"	.260	5/8"	1-1/8"
CS-25-SS	304 SS	1/4"	.260	5/8"	1-1/8"
CS-31-AL	6061 T6	5/16"	.325	1"	1-1/8"
CS-31-BR	Brass	5/16"	.325	1"	1-1/8"
CS-31-SS	304 SS	5/16"	.325	1"	1-1/8"
CS-37-AL	6061 T6	3/8"	.385	1"	1-1/8"
CS-37-BR	Brass	3/8"	.385	1"	1-1/8"
CS-37-SS	304 SS	3/8"	.385	1"	1-1/8"
CS-50-AL	6061 T6	1/2"	.515	1-1/4"	1-3/8"
CS-50-BR	Brass	1/2"	.515	1-1/4"	1-3/8"
CS-50-SS	304 SS	1/2"	.515	1-1/4"	1-3/8"
CS-62-AL	6061 T6	5/8"	.640	1-1/4"	1-3/8"
CS-62-BR	Brass	5/8"	.640	1-1/4"	1-3/8"
CS-62-SS	304 SS	5/8"	.640	1-1/4"	1-3/8"
CS-75-AL	6061 T6	3/4"	.765	1-1/2"	1-3/8"
CS-75-BR	Brass	3/4"	.765	1-1/2"	1-3/8"
CS-75-SS	304 SS	3/4"	.765	1-1/2"	1-3/8"
CS-87-AL	6061 T6	7/8"	.890	1-3/4"	1-1/2"
CS-87-BR	Brass	7/8"	.890	1-3/4"	1-1/2"
CS-87-SS	304 SS	7/8"	.890	1-3/4"	1-1/2"
CS-100-AL	6061 T6	1"	1.015	1-3/4"	1-1/2"
CS-100-BR	Brass	1"	1.015	1-3/4"	1-1/2"
CS-100-SS	304 SS	1"	1.015	1-3/4"	1-1/2"
CS-112-AL	6061 T6	1-1/8"	1.140	1-7/8"	1-1/2"
CS-112-BR	Brass	1-1/8"	1.140	1-7/8"	1-1/2"
CS-112-SS	304 SS	1-1/8"	1.140	1-7/8"	1-1/2"
CS-125-AL	6061 T6	1-1/4"	1.265	2"	1-3/4"
CS-125-BR	Brass	1-1/4"	1.265	2"	1-3/4"
CS-125-SS	304 SS	1-1/4"	1.265	2"	1-3/4"
CS-137-AL	6061 T6	1-3/8"	1.390	2-1/8"	1-7/8"
CS-137-BR	Brass	1-3/8"	1.390	2-1/8"	1-7/8"
CS-137-SS	304 SS	1-3/8"	1.390	2-1/8"	1-7/8"
CS-150-AL	6061 T6	1-1/2"	1.515	2-1/4"	2"
CS-150-BR	Brass	1-1/2"	1.515	2-1/4"	2"
CS-150-SS	304 SS	1-1/2"	1.515	2-1/4"	2"
CS-162-AL	6061 T6	1-5/8"	1.640	2-3/8"	2-1/8"
CS-162-BR	Brass	1-5/8"	1.640	2-3/8"	2-1/8"
CS-162-SS	304 SS	1-5/8"	1.640	2-3/8"	2-1/8"
CS-175-AL	6061 T6	1-3/4"	1.765	2-1/2"	2-1/4"
CS-175-BR	Brass	1-3/4"	1.765	2-1/2"	2-1/4"
CS-175-SS	304 SS	1-3/4"	1.765	2-1/2"	2-1/4"
CS-200-AL	6061 T6	2"	2.015	2-3/4"	2-1/2"
CS-200-BR	Brass	2"	2.015	2-3/4"	2-1/2"
CS-200-SS	304 SS	2"	2.015	2-3/4"	2-1/2"
CS-212-AL	6061 T6	2-1/8"	2.140	2-7/8"	2-1/2"
CS-212-BR	Brass	2-1/8"	2.140	2-7/8"	2-1/2"
CS-212-SS	304 SS	2-1/8"	2.140	2-7/8"	2-1/2"



7



Line Seal Straight thru Connectors

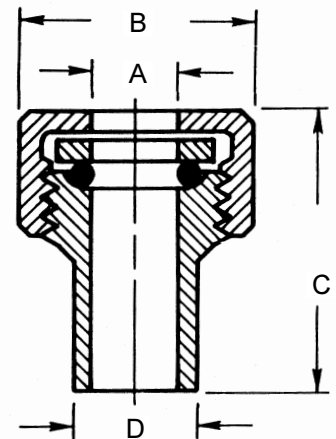


Part Number	Body material	Tube OD	A	B	C
LS-06-AL	6061T6	1/16"	.072	5/8"	1-5/8"
LS-06-BR	Brass	1/16"	.072	5/8"	1-5/8"
LS-06-SS	304 SS	1/16"	.072	5/8"	1-5/8"
LS-09-AL	6061T6	3/32"	.103	5/8"	1-5/8"
LS-09-BR	Brass	3/32"	.103	5/8"	1-5/8"
LS-09-SS	304 SS	3/32"	.103	5/8"	1-5/8"
LS-12-AL	6061T6	1/8"	.135	5/8"	1-5/8"
LS-12-BR	Brass	1/8"	.135	5/8"	1-5/8"
LS-12-SS	304 SS	1/8"	.135	5/8"	1-5/8"
LS-18-AL	6061T6	3/16"	.197	5/8"	1-5/8"
LS-18-BR	Brass	3/16"	.197	5/8"	1-5/8"
LS-18-SS	304 SS	3/16"	.197	5/8"	1-5/8"
LS-25-AL	6061T6	1/4"	.260	5/8"	1-5/8"
LS-25-BR	Brass	1/4"	.260	5/8"	1-5/8"
LS-25-SS	304 SS	1/4"	.260	5/8"	1-5/8"
LS-31-AL	6061T6	5/16"	.325	1"	1-1/2"
LS-31-BR	Brass	5/16"	.325	1"	1-1/2"
LS-31-SS	304 SS	5/16"	.325	1"	1-1/2"
LS-37-AL	6061T6	3/8"	.385	1"	1-1/2"
LS-37-BR	Brass	3/8"	.385	1"	1-1/2"
LS-37-SS	304 SS	3/8"	.385	1"	1-1/2"
LS-50-AL	6061T6	1/2"	.515	1-1/4"	1-1/2"
LS-50-BR	Brass	1/2"	.515	1-1/4"	1-1/2"
LS-50-SS	304 SS	1/2"	.515	1-1/4"	1-1/2"
LS-62-AL	6061T6	5/8"	.640	1-1/4"	1-1/2"
LS-62-BR	Brass	5/8"	.640	1-1/4"	1-1/2"
LS-62-SS	304 SS	5/8"	.640	1-1/4"	1-1/2"
LS-75-AL	6061T6	3/4"	.765	1-1/2"	1-1/2"
LS-75-BR	Brass	3/4"	.765	1-1/2"	1-1/2"
LS-75-SS	304 SS	3/4"	.765	1-1/2"	1-1/2"
LS-87-AL	6061T6	7/8"	.890	1-3/4"	1-1/2"
LS-87-BR	Brass	7/8"	.890	1-3/4"	1-1/2"
LS-87-SS	304 SS	7/8"	.890	1-3/4"	1-1/2"
LS-100-AL	6061T6	1"	1.015	1-3/4"	1-1/2"
LS-100-BR	Brass	1"	1.015	1-3/4"	1-1/2"
LS-100-SS	304 SS	1"	1.015	1-3/4"	1-1/2"
LS-112-AL	6061T6	1-1/8"	1.140	1-7/8"	1-1/2"
LS-112-BR	Brass	1-1/8"	1.140	1-7/8"	1-1/2"
LS-112-SS	304 SS	1-1/8"	1.140	1-7/8"	1-1/2"
LS-125-AL	6061T6	1-1/4"	1.265	2"	1-3/4"
LS-125-BR	Brass	1-1/4"	1.265	2"	1-3/4"
LS-125-SS	304 SS	1-1/4"	1.265	2"	1-3/4"
LS-137-AL	6061T6	1-3/8"	1.390	2-1/8"	1-3/4"
LS-137-BR	Brass	1-3/8"	1.390	2-1/8"	1-3/4"
LS-137-SS	304 SS	1-3/8"	1.390	2-1/8"	1-3/4"
LS-150-AL	6061T6	1-1/2"	1.515	2-1/4"	1-3/4"
LS-150-BR	Brass	1-1/2"	1.515	2-1/4"	1-3/4"
LS-150-SS	304 SS	1-1/2"	1.515	2-1/4"	1-3/4"
LS-162-AL	6061T6	1-5/8"	1.640	2-3/8"	1-3/4"
LS-162-BR	Brass	1-5/8"	1.640	2-3/8"	1-3/4"
LS-162-SS	304 SS	1-5/8"	1.640	2-3/8"	1-3/4"
LS-175-AL	6061T6	1-3/4"	1.765	2-1/2"	1-3/4"
LS-175-BR	Brass	1-3/4"	1.765	2-1/2"	1-3/4"
LS-175-SS	304 SS	1-3/4"	1.765	2-1/2"	1-3/4"
LS-200-AL	6061T6	2"	2.015	2-3/4"	2"
LS-200-BR	Brass	2"	2.015	2-3/4"	2"
LS-200-SS	304 SS	2"	2.015	2-3/4"	2"
LS-212-AL	6061T6	2-1/8"	2.140	2-7/8"	2"
LS-212-BR	Brass	2-1/8"	2.140	2-7/8"	2"
LS-212-SS	304 SS	2-1/8"	2.140	2-7/8"	2"



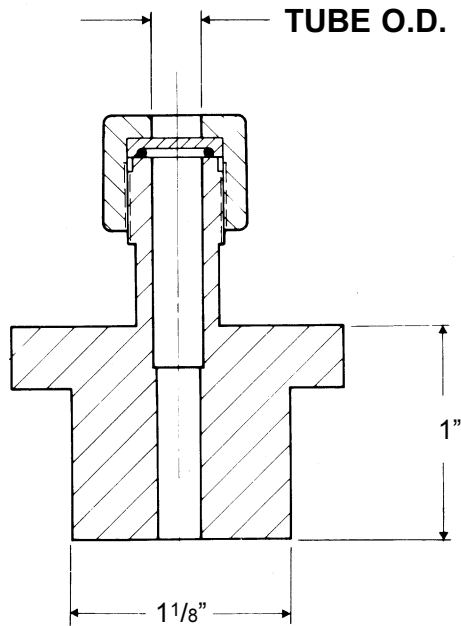
Quick Connect Fittings

Part No.	Body material	Tube OD	A	B	C	D
QS-06-AL	6061T6	1/16"	.072	5/8"	1-1/8"	3/8"
QS-06-BR	Brass	1/16"	.072	5/8"	1-1/8"	3/8"
QS-06-SS	304 SS	1/16"	.072	5/8"	1-1/8"	3/8"
QS-09-AL	6061T6	3/32"	.103	5/8"	1-1/8"	3/8"
QS-09-BR	Brass	3/32"	.103	5/8"	1-1/8"	3/8"
QS-09-SS	304 SS	3/32"	.103	5/8"	1-1/8"	3/8"
QS-12-AL	6061T6	1/8"	.135	5/8"	1-1/8"	3/8"
QS-12-BR	Brass	1/8"	.135	5/8"	1-1/8"	3/8"
QS-12-SS	304 SS	1/8"	.135	5/8"	1-1/8"	3/8"
QS-18-AL	6061T6	3/16"	.197	5/8"	1-1/8"	3/8"
QS-18-BR	Brass	3/16"	.197	5/8"	1-1/8"	3/8"
QS-18-SS	304 SS	3/16"	.197	5/8"	1-1/8"	3/8"
QS-25-AL	6061T6	1/4"	.260	5/8"	1-1/8"	3/8"
QS-25-BR	Brass	1/4"	.260	5/8"	1-1/8"	3/8"
QS-25-SS	304 SS	1/4"	.260	5/8"	1-1/8"	3/8"
QS-31-AL	6061T6	5/16"	.325	1"	1-1/8"	5/8"
QS-31-BR	Brass	5/16"	.325	1"	1-1/8"	5/8"
QS-31-SS	304 SS	5/16"	.325	1"	1-1/8"	5/8"
QS-37-AL	6061T6	3/8"	.385	1"	1-1/8"	5/8"
QS-37-BR	Brass	3/8"	.385	1"	1-1/8"	5/8"
QS-37-SS	304 SS	3/8"	.385	1"	1-1/8"	5/8"
QS-50-AL	6061T6	1/2"	.515	1-1/4"	1-3/8"	3/4"
QS-50-BR	Brass	1/2"	.515	1-1/4"	1-3/8"	3/4"
QS-50-SS	304 SS	1/2"	.515	1-1/4"	1-3/8"	3/4"
QS-62-AL	6061T6	5/8"	.640	1-1/4"	1-3/8"	3/4"
QS-62-BR	Brass	5/8"	.640	1-1/4"	1-3/8"	3/4"
QS-62-SS	304 SS	5/8"	.640	1-1/4"	1-3/8"	3/4"
QS-75-AL	6061T6	3/4"	.765	1-1/2"	1-3/8"	7/8"
QS-75-BR	Brass	3/4"	.765	1-1/2"	1-3/8"	7/8"
QS-75-SS	304 SS	3/4"	.765	1-1/2"	1-3/8"	7/8"
QS-87-AL	6061T6	7/8"	.890	1-3/4"	1-1/2"	1-1/8"
QS-87-BR	Brass	7/8"	.890	1-3/4"	1-1/2"	1-1/8"
QS-87-SS	304 SS	7/8"	.890	1-3/4"	1-1/2"	1-1/8"
QS-100-AL	6061T6	1"	1.015	1-3/4"	1-1/2"	1-1/8"
QS-100-BR	Brass	1"	1.015	1-3/4"	1-1/2"	1-1/8"
QS-100-SS	304 SS	1"	1.015	1-3/4"	1-1/2"	1-1/8"
QS-112-AL	6061T6	1-1/8"	1.140	1-7/8"	1-1/2"	1-3/8"
QS-112-BR	Brass	1-1/8"	1.140	1-7/8"	1-1/2"	1-3/8"
QS-112-SS	304 SS	1-1/8"	1.140	1-7/8"	1-1/2"	1-3/8"
QS-125-AL	6061T6	1-1/4"	1.265	2"	1-3/4"	1-1/2"
QS-125-BR	Brass	1-1/4"	1.265	2"	1-3/4"	1-1/2"
QS-125-SS	304 SS	1-1/4"	1.265	2"	1-3/4"	1-1/2"
QS-137-AL	6061T6	1-3/8"	1.390	2-1/8"	1-7/8"	1-5/8"
QS-137-BR	Brass	1-3/8"	1.390	2-1/8"	1-7/8"	1-5/8"
QS-137-SS	304 SS	1-3/8"	1.390	2-1/8"	1-7/8"	1-5/8"
QS-150-AL	6061T6	1-1/2"	1.515	2-1/4"	2"	1-3/4"
QS-150-BR	Brass	1-1/2"	1.515	2-1/4"	2"	1-3/4"
QS-150-SS	304 SS	1-1/2"	1.515	2-1/4"	2"	1-3/4"
QS-162-AL	6061T6	1-5/8"	1.640	2-3/8"	2-1/8"	1-7/8"
QS-162-BR	Brass	1-5/8"	1.640	2-3/8"	2-1/8"	1-7/8"
QS-162-SS	304 SS	1-5/8"	1.640	2-3/8"	2-1/8"	1-7/8"
QS-175-AL	6061T6	1-3/4"	1.765	2-1/2"	2-1/4"	2"
QS-175-BR	Brass	1-3/4"	1.765	2-1/2"	2-1/4"	2"
QS-175-SS	304 SS	1-3/4"	1.765	2-1/2"	2-1/4"	2"
QS-200-AL	6061T6	2"	2.015	2-3/4"	2-1/2"	2-1/4"
QS-200-BR	Brass	2"	2.015	2-3/4"	2-1/2"	2-1/4"
QS-200-SS	304 SS	2"	2.015	2-3/4"	2-1/2"	2-1/4"
QS-212-AL	6061T6	2-1/8"	2.140	2-7/8"	2-1/2"	2-1/4"
QS-212-BR	Brass	2-1/8"	2.140	2-7/8"	2-1/2"	2-1/4"
QS-212-SS	304 SS	2-1/8"	2.140	2-7/8"	2-1/2"	2-1/4"



7

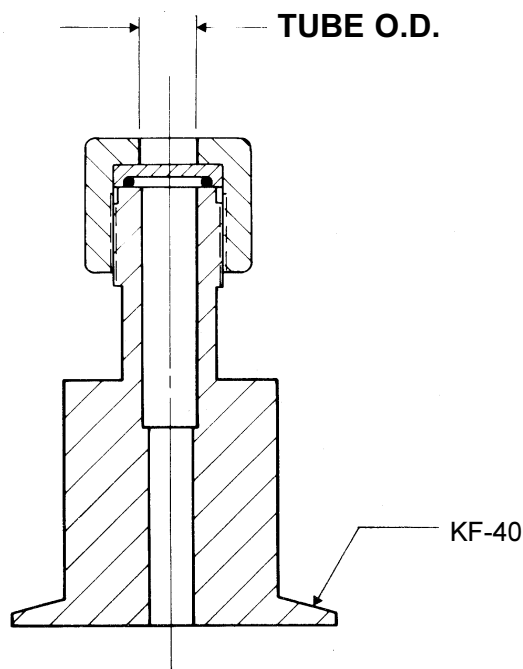




Leak Detector Adapter Fittings

- Brass construction
- 1-1/8" port to compressi
- Viton® O-ring

Part Number	Tube O.D.
LQ-06	1/16"
LQ-09	3/32"
LQ-12	1/8"
LQ-25	1/4"
LQ-31	5/16"
LQ-37	3/8"
LQ-50	1/2"
LQ-62	5/8"
LQ-75	3/4"
LQ-87	7/8"
LQ-100	1"
LQ-112	1-1/8"
LQ-125	1-1/4"
LQ-137	1-3/8"
LQ-150	1-1/2"
LQ-162	1-5/8"
LQ-175	1-3/4"
LQ-200	2"
LQ-212	2-1/8"



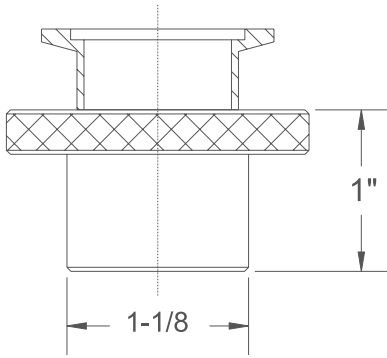
Leak Detector Adapter Fittings

- Brass Construction
- ISO-NW 40 to compression seal,
- Viton® O-ring

Part Number	Tube O.D.
LK-06	1/16"
LK-09	3/32"
LK-12	1/8"
LK-18	3/16"
LK-25	1/4"
LK-31	5/16"
LK-37	3/8"
LK-50	1/2"
LK-62	5/8"
LK-75	3/4"
LK-87	7/8"
LK-100	1"
LK-112	1-1/8"
LK-125	1-1/4"
LK-137	1-3/8"
LK-150	1-1/2"
LK-162	1-5/8"
LK-175	1-3/4"
LK-200	2"
LK-212	2-1/8"



Leak Detector Adapter Fittings, Plug Seals, Brass and Stainless Steel



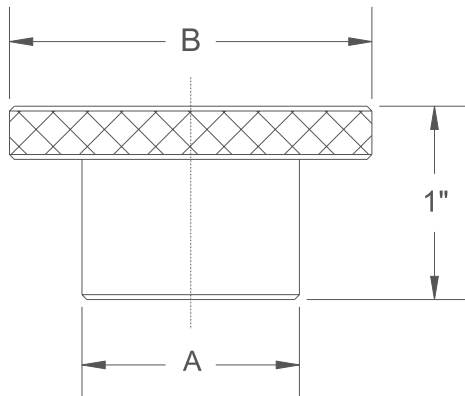
Leak Detector Adapter Fittings

- Stainless steel 304 construction
- 1-1/8" port to ISO-NW

Part Number	ISO-NW
LDF-16	NW 16
LDF-25	NW 25
LDF-40	NW 40
LDF-50	NW 50

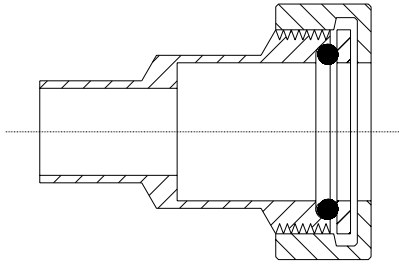
Plug Seals

Part Number	Material	A	B
PS-06	Brass	1/16"	5/8"
PS-06-SS	304 SS	1/16"	5/8"
PS-09	Brass	3/32"	5/8"
PS-09-SS	304 SS	3/32"	5/8"
PS-12	Brass	1/8"	5/8"
PS-12-SS	304 SS	1/8"	5/8"
PS-18	Brass	3/16"	5/8"
PS-18-SS	304 SS	3/16"	5/8"
PS-25	Brass	1/4"	5/8"
PS-25-SS	304 SS	1/4"	5/8"
PS-31	Brass	5/16"	1"
PS-31-SS	304 SS	5/16"	1"
PS-37	Brass	3/8"	1"
PS-37-SS	304 SS	3/8"	1"
PS-50	Brass	1/2"	1-1/4"
PS-50-SS	304 SS	1/2"	1-1/4"
PS-62	Brass	5/8"	1-1/4"
PS-62-SS	304 SS	5/8"	1-1/4"
PS-75	Brass	3/4"	1-1/2"
PS-75-SS	304 SS	3/4"	1-1/2"
PS-87	Brass	7/8"	1-3/4"
PS-87-SS	304 SS	7/8"	1-3/4"
PS-100	Brass	1"	1-3/4"
PS-100-SS	304 SS	1"	1-3/4"
PS-112	Brass	1-1/8"	1-7/8"
PS-112-SS	304 SS	1-1/8"	1-7/8"
PS-125	Brass	1-1/4"	2"
PS-125-SS	304 SS	1-1/4"	2"
PS-137	Brass	1-3/8"	2-1/8"
PS-137-SS	304 SS	1-3/8"	2-1/8"
PS-150	Brass	1-1/2"	2-1/4"
PS-150-SS	304 SS	1-1/2"	2-1/4"
PS-162	Brass	1-5/8"	2-3/8"
PS-162-SS	304 SS	1-5/8"	2-3/8"
PS-175	Brass	1-3/4"	2-1/2"
PS-175-SS	304 SS	1-3/4"	2-1/2"
PS-200	Brass	2"	2-3/4"
PS-200-SS	304 SS	2"	2-3/4"
PS-212	Brass	2-1/8"	2-7/8"
PS-212-SS	304 SS	2-1/8"	2-7/8"



Compression Fittings, Adapters

The **CPB / CPS SERIES** adapters for gauge tubes are intended to allow the user to use standard gauge tubes in existing equipment with non standard ports. These adapters are available in brass and stainless steel bodies and are complete with Viton® O-ring.

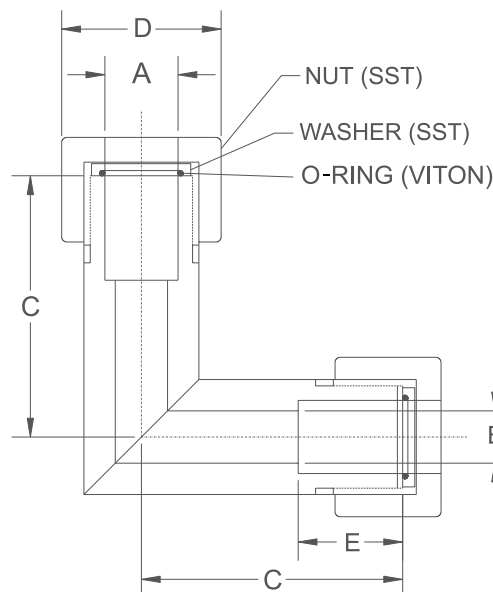


Specifications:

Part Number	Description
CPB-625-750-BR	Brass 5/8" OD male tube to 3/4" compression
CPB-709-750-BR	Brass .709 OD male tube to 3/4" compression
CPB-750-1000-BR	Brass 3/4" OD male tube to 1" compression
CPS-625-750-SS	Stainless steel 5/8" OD male tube to 3/4" compression
CPS-709-750-SS	Stainless steel .709 OD male tube to 3/4" compression
CPS-750-1000-SS	Stainless steel 3/4" OD male tube to 1" compression fitting

90° Union Elbow compression adapter

The **ELC SERIES** compression adapters are intended to connect fractional tubes and the bodies are manufactured from 304 stainless steel and are electropolished and are helium leak tested at 3×10^{-9} torr and are supplied with nut, washer and Viton® O-ring



Specifications:

Part Number	Description	A	B	C	D	E
ELC-25	For 1/4" OD tube	.265	.187	7/8"	1/2"	5/8"
ELC-37	For 3/8" OD tube	.385	.312	1-1/2"	1"	1"
ELC-50	For 1/2" OD tube	.515	.437	1-1/2"	1"	1-1/4"



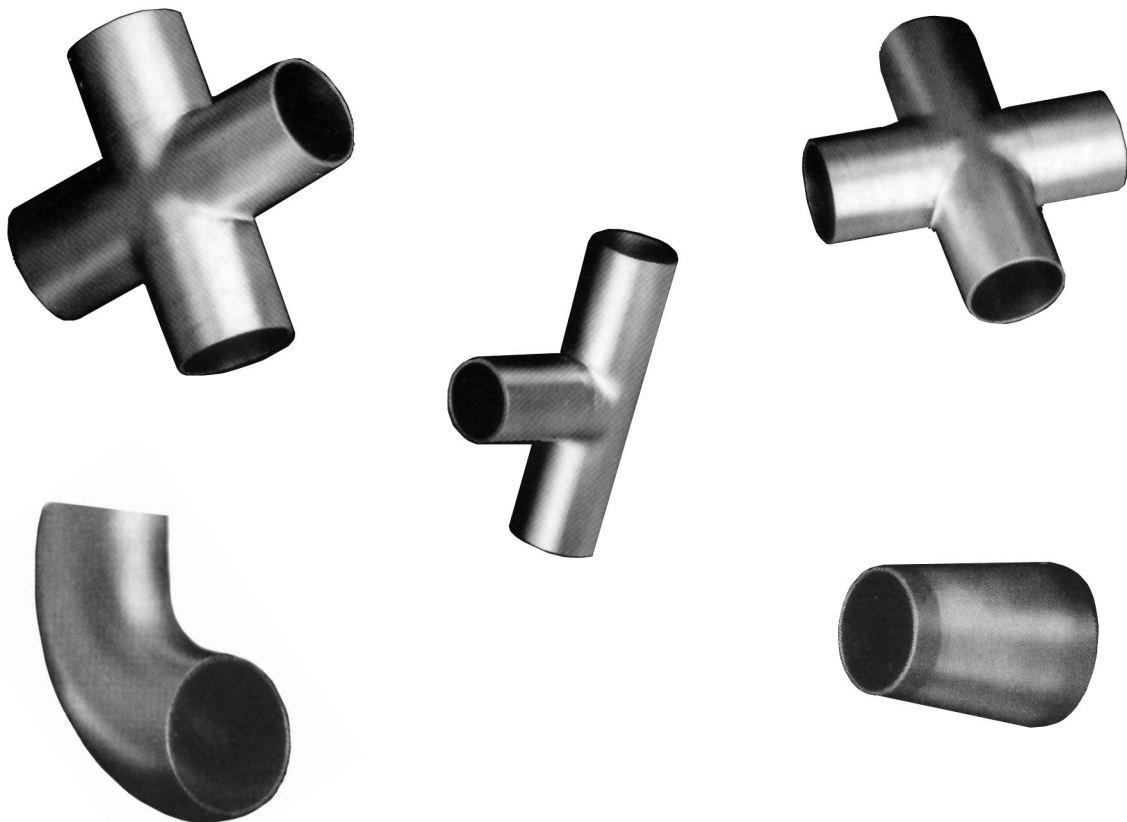
WELD FITTINGS

KEY HIGH VACUUM BUTT WELD FITTINGS are produced from high quality type 304 stainless steel tubing. All crosses and tees in this catalog are constructed with the pulled port technique, which features full penetration butt welds. This procedure is by far the most desirable method for high vacuum and ultra-high vacuum, as this eliminates entrapment areas that cause virtual leaks. This assures rapid pumpdown of your system and minimizes outgassing. The standard finish on these fittings is a glass bead type with all burrs removed. Upon request, electropolished fittings can be supplied, as well as fittings constructed of type 316 stainless steel.

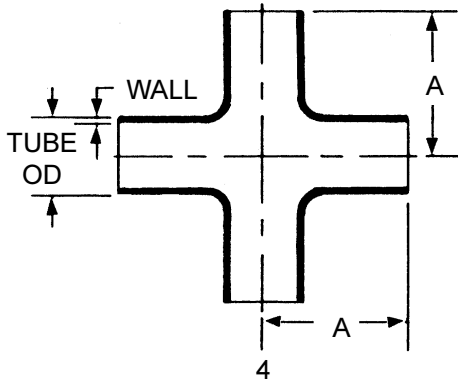
Resulting from numerous requests we have received, new in this catalog are concentric reducers for minimal conductance loss, and reducer crosses.

Designed to be used as (building-block) components with KF (rough vacuum), ISO and ASA (high vacuum) and Metal Sealing Flanges (ultra-high vacuum), all fittings are easily welded using TIG (tungsten inert gas) fusion weld process. This is the correct procedure for clean vacuum quality welds. Filler rod is not used.

All **KEY** Butt Weld Fittings are cleaned, packaged and ready for immediate use. All welds are leak tested on a helium mass spectrometer having a sensitivity of 5×10^{-10} std cc/sec and exhibit no leakage.



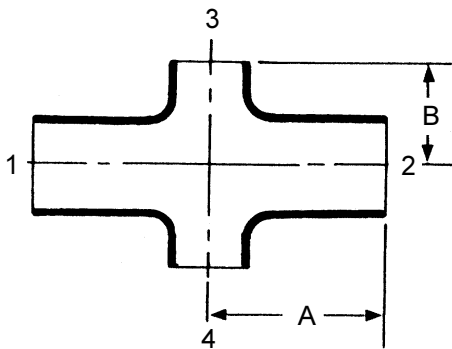
KEY Stainless Steel Weld Fittings



4-Way Cross

Part Number	Tube OD	Wall	A
CRS50-SS4	.50	.065	.75
CRS75-SS4	.75	.065	1.00
CRS100-SS4	1.00	.065	1.88
CRS150-SS4	1.50	.065	2.25
CRS200-SS4	2.00	.065	3.00
CRS250-SS4	2.50	.065	3.00
CRS300-SS4	3.00	.065	3.25
CRS400-SS4	4.00	.083	3.88
CRS500-SS4	5.00	.083	4.25
CRS600-SS4	6.00	.109	5.00

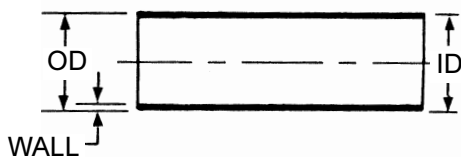
Reducer cross



Part Number	Arm OD	Leg OD	A	B
CRS100-50-SS4	1.00	.50	1.88	1.50
CRS100-75-SS4	1.00	.75	1.88	2.00
CRS150-50-SS4	1.50	.50	2.25	1.75
CRS150-75-SS4	1.50	.75	2.25	2.25
CRS150-100-SS4	1.50	1.00	2.25	2.13
CRS200-75-SS4	2.00	.75	3.00	2.50
CRS200-150-SS4	2.00	1.50	3.00	2.50
CRS250-150-SS4	2.50	1.50	3.00	2.75
CRS250-200-SS4	2.50	2.00	3.00	3.25
CRS300-150-SS4	3.00	1.50	3.25	3.00
CRS300-200-SS4	3.00	2.00	3.25	3.50
CRS300-250-SS4	3.00	2.50	3.25	3.25
CRS400-150-SS4	4.00	1.50	3.88	3.50
CRS400-200-SS4	4.00	2.00	3.88	4.00
CRS400-250-SS4	4.00	2.50	3.88	3.75
CRS400-300-SS4	4.00	3.00	3.88	3.75
CRS500-400-SS4	5.00	4.00	4.50	4.38
CRS600-250-SS4	6.00	2.50	5.00	4.75
CRS600-300-SS4	6.00	3.00	5.00	4.75
CRS600-400-SS4	6.00	4.00	5.00	4.88
CRS600-500-SS4	6.00	5.00	5.00	5.00
CRS800-600-SS4	8.00	6.00	6.00	6.00

Tubing

- Tube ends deburred
- Cut to length, sold per foot

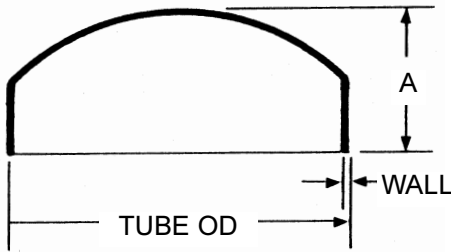


Part Number	OD	ID	Wall
SST50	.50	.402	.049
SST75	.75	.680	.065
SST100	1.00	.870	.065
SST150	1.50	1.370	.065
SST200	2.00	1.870	.065
SST250	2.50	2.370	.065
SST300	3.00	2.870	.083
SST400	4.00	3.834	.083
SST600	6.00	5.834	.083



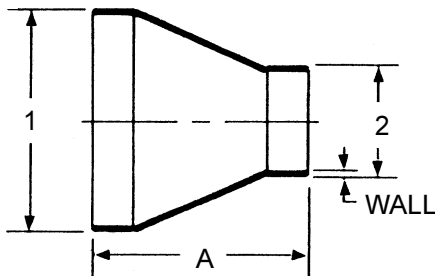
KEY Stainless Steel Weld Fittings

End Caps



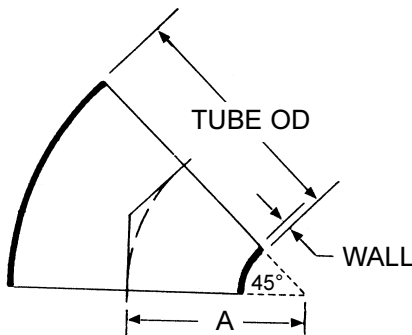
Part Number	Tube OD	Wall	A
EC50	.50	.065	.25
EC75	.75	.065	.31
EC100	1.00	.065	.37
EC150	1.50	.065	.56
EC200	2.00	.065	.75
EC250	2.50	.065	1.00
EC300	3.00	.065	1.25
EC400	4.00	.083	1.50
EC600	6.00	.109	2.00

Conical Reducers



Part Number	Tube OD 1	Tube OD 2	A	Wall
CR75-100	1.00	.75	2.375	.065
CR75-150	1.50	.75	2.375	.065
CR100-150	1.50	1.00	2.375	.065
CR100-200	2.00	1.00	2.375	.065
CR150-200	2.00	1.50	2.375	.065
CR150-250	2.50	1.50	2.375	.065
CR200-250	2.50	2.00	2.375	.065
CR150-300	3.00	1.50	3.625	.065
CR200-300	3.00	2.00	3.625	.065
CR250-300	3.00	2.50	3.625	.065
CR200-400	4.00	2.00	3.625	.065
CR250-400	4.00	2.50	3.625	.065
CR300-400	4.00	3.00	3.625	.065
CR300-600	6.00	3.00	9.000	.083
CR400-600	6.00	4.00	9.000	.083

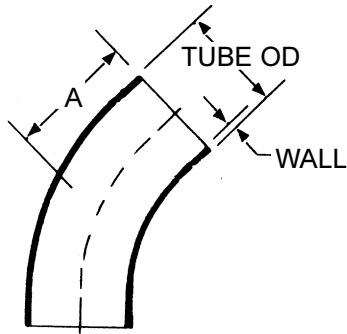
45° Radius Elbow



Part Number	Tube OD	Wall	A
EL050-45SS	.50	.065	.75
EL075-45SS	.75	.065	1.00
EL100-45SS	1.00	.065	1.50
EL150-45SS	1.50	.065	2.25
EL200-45SS	2.00	.065	3.00
EL250-45SS	2.50	.065	3.75
EL300-45SS	3.00	.065	4.50
EL400-45SS	4.00	.083	6.00
EL600-45SS	6.00	.109	9.00

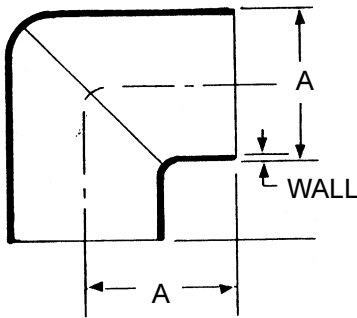


KEY Stainless Steel Weld Fittings



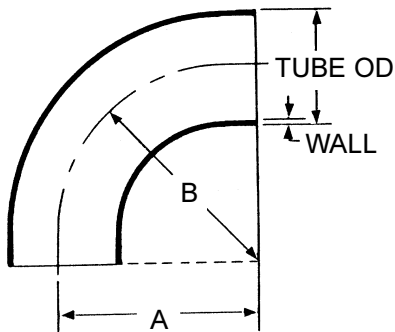
45° Radius Tangent Elbow

Part Number	Tube OD	Wall	A
EL075-45TSS	.75	.065	.764
EL100-45TSS	1.00	.065	1.187
EL150-45TSS	1.50	.065	1.625
EL200-45TSS	2.00	.065	2.312
EL250-45TSS	2.50	.065	2.995
EL300-45TSS	3.00	.083	3.683
EL400-45TSS	4.00	.083	4.812



90° Mitered Elbow

Part Number	Tube OD	Wall	A
EL075-90MSS	.75	.065	1.00
EL100-90MSS	1.00	.065	1.88
EL150-90MSS	1.50	.065	2.25
EL200-90MSS	2.00	.065	3.00
EL250-90MSS	2.50	.065	3.00
EL300-90MSS	3.00	.083	3.25
EL400-90MSS	4.00	.083	3.88
EL500-90MSS	5.00	.083	4.25
EL600-90MSS	6.00	.083	5.00



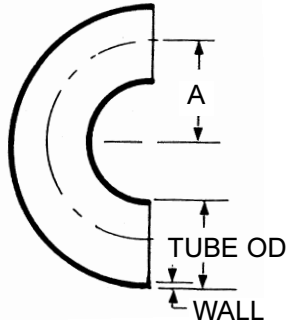
90° Radius Elbow

Part Number	Tube OD	Wall	A	B
EL50-90SS	.50	.065	.75	.75
EL75-90SS	.75	.065	1.12	1.12
EL100-90SS	1.00	.065	1.50	1.50
EL150-90SS	1.50	.065	2.25	2.25
EL200-90SS	2.00	.065	3.00	3.00
EL250-90SS	2.50	.065	3.75	3.75
EL300-90SS	3.00	.083	4.50	4.50
EL400-90SS	4.00	.083	6.00	6.00
EL600-90SS	6.00	.109	9.00	9.00

7

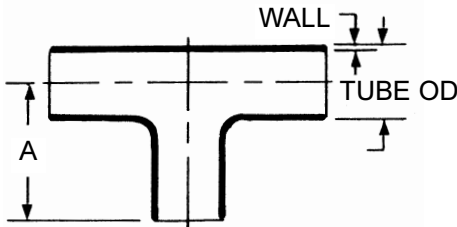


KEY Stainless Steel Weld Fittings



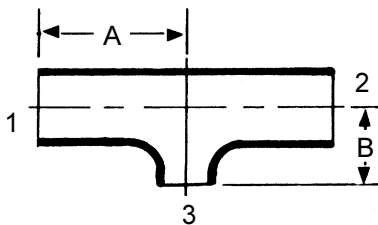
180° U-BEND Radius Elbow

Part Number	Tube OD	Wall	A
EL50-180SS	.50	.065	.75
EL75-180SS	.75	.065	1.12
EL100-180SS	1.00	.065	1.50
EL150-180SS	1.50	.065	2.25
EL200-180SS	2.00	.065	3.00
EL300-180SS	3.00	.065	4.50
EL400-180SS	4.00	.083	6.00



Tee

Part Number	Tube OD	Wall	A
T50-SS	.50	.065	.75
T75-SS	.75	.065	1.88
T100-SS	1.00	.065	1.88
T150-SS	1.50	.065	2.25
T200-SS	2.00	.065	3.00
T250-SS	2.50	.065	3.00
T300-SS	3.00	.065	3.25
T400-SS	4.00	.083	3.88
T500-SS	5.00	.083	4.25
T600-SS	6.00	.083	5.50



Reducer Tee

Part Number	Arm OD	Leg OD	A	B
T100-50-SS	1.00	.50	1.88	1.50
T100-75-SS	1.00	.75	1.88	2.00
T150-50-SS	1.50	.50	2.25	1.75
T150-75-SS	1.50	.75	2.25	2.25
T150-100-SS	1.50	1.00	2.25	2.13
T200-75-SS	2.00	.75	3.00	2.50
T200-100-SS	2.00	1.00	3.00	2.37
T200-150-SS	2.00	1.50	3.00	2.50
T250-150-SS	2.50	1.50	3.00	2.75
T250-200-SS	2.50	2.00	3.00	3.25
T300-150-SS	3.00	1.50	3.25	3.00
T300-200-SS	3.00	2.00	3.25	3.50
T300-250-SS	3.00	2.50	3.25	3.25
T400-150-SS	4.00	1.50	3.88	3.50
T400-200-SS	4.00	2.00	3.88	4.00
T400-250-SS	4.00	2.50	3.88	3.75
T400-300-SS	4.00	3.00	3.88	3.75
T500-400-SS	5.00	4.00	4.50	4.38
T600-250-SS	6.00	2.50	5.00	4.75
T600-400-SS	6.00	4.00	5.00	4.88
T600-500-SS	6.00	5.00	5.00	5.00
T800-600-SS	8.00	6.00	6.00	6.00

